

# **DAM-3501(T)**

## **User's Manual**



**Beijing ART Technology Development Co., Ltd.**

## DAM-3501(T) Module

### Single-phase Intelligent Alternating Current Module

- ※ Voltage Range: 400V (can be customized)
- ※ Current Range: 50A (can be customized)
- ※ Precision:  $\pm 0.2\%$
- ※ Output Parameters: voltage, current, active power, reactive power, apparent power, power factor, total power degree, humidity (only T module supports), temperature (only T module supports)
- ※ Built-in Watchdog
- ※ External Current Transformer
- ※ On-board temperature and humidity sensor (optional)
- ※ Power Consumption:  $0.22W@24V_{DC}$
- ※ Power Supply: unregulated  $10\sim 30V_{DC}$

### Baud Rate Configuration Code Table

Code	00	01	02	03	04	05	06	07
Rate	1200	2400	4800	9600	19200	38400	57600	115200

### Terminal Definition

No.	Name	Description
1	Ua	Phase measurement voltage input
3	UGND	Measurement voltage input ground, isolation with power ground.
6	INIT*	Reset pin, connect with(B)GND, then power on
7	(Y)DATA+	RS-485 (positive)
8	(G)DATA-	RS-485 (negative)
9	(R)+Vs	DC power input , $+10\sim +30V_{DC}$
10	(B)GND	DC power output
18	Iao	When use external transformer, A-phase current transformer output signal - pin connects with this pin.
20	Iai	When use external transformer, A-phase current transformer output signal + pin connects with this pin.
others	NC	Reservation

## DAM-3501(T)

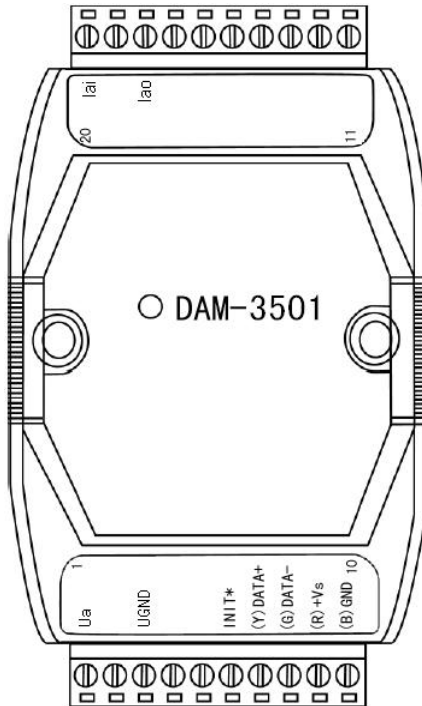
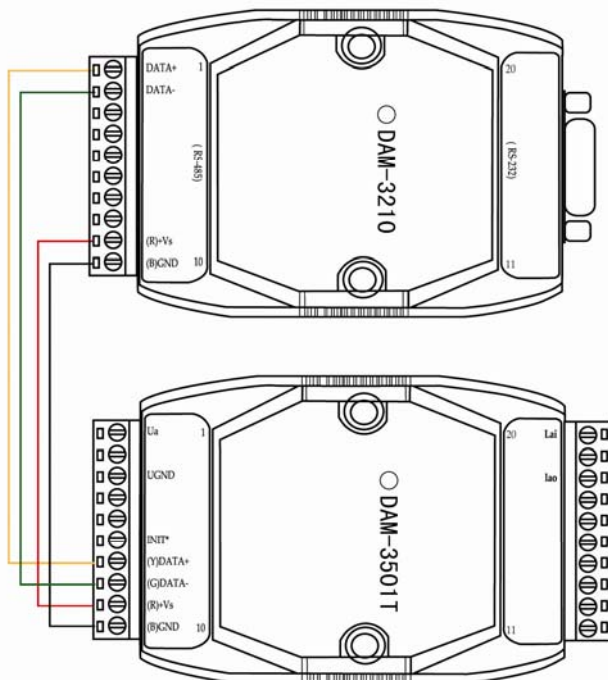


Fig. 1 DAM-3501(T) Drawing



## Application Wiring

Reset Connection:

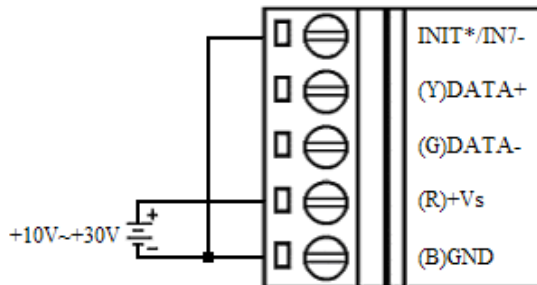
Shorted the INIT \* and GND shorted, add +10 ~ +30 VDC between +Vs and GND, power on, the module indicator

quickly flashes three times, power off until the indicator stops flashing, disconnect the INIT \* and GND, then reset the module has been completed.

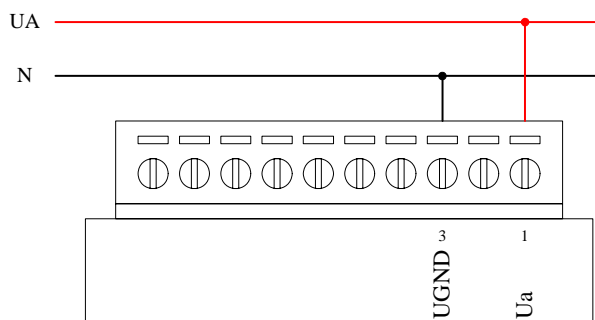
After reset successfully, the module restore the factory default values:

Module Address: 1

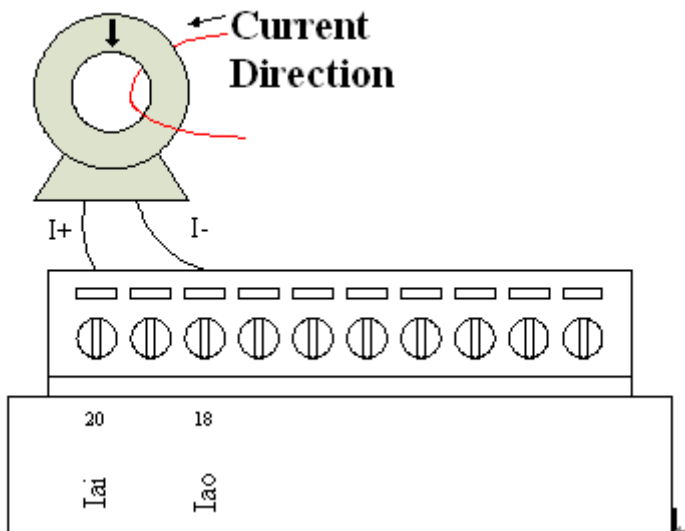
Baud Rate: 9600



Voltage signal connection method

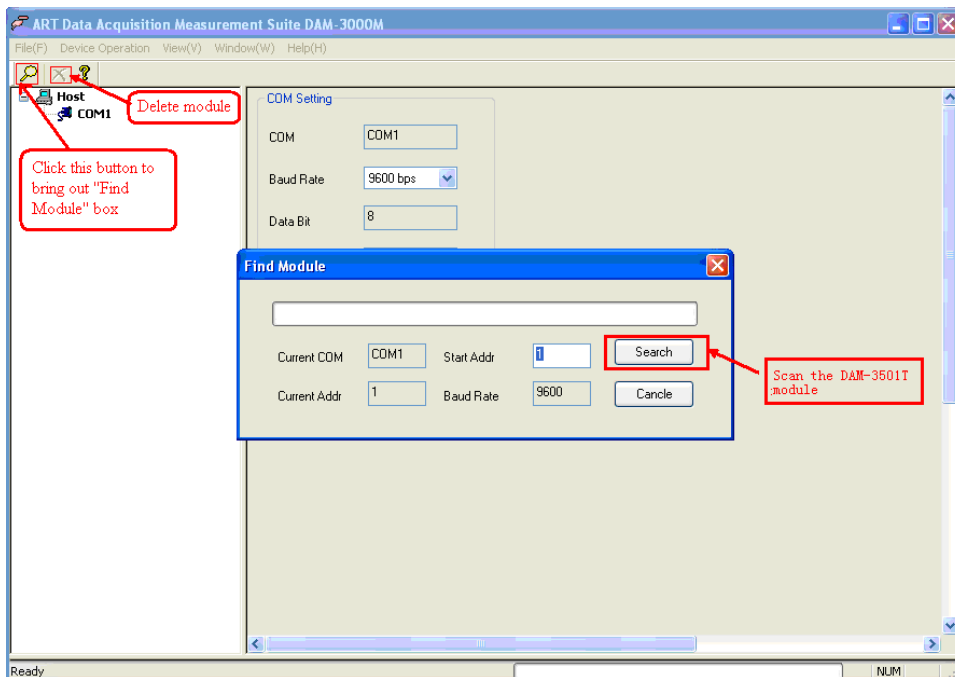
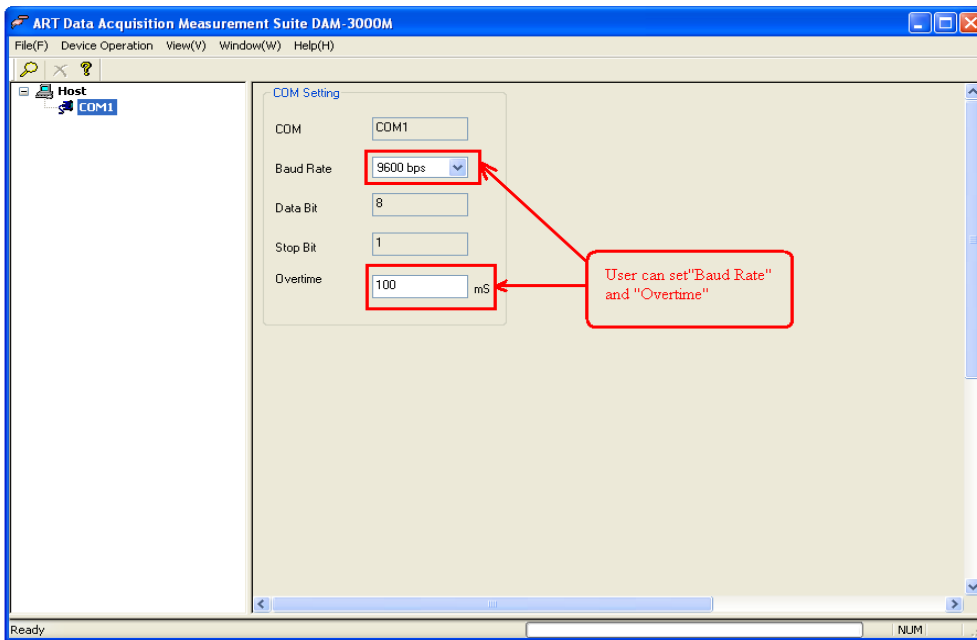


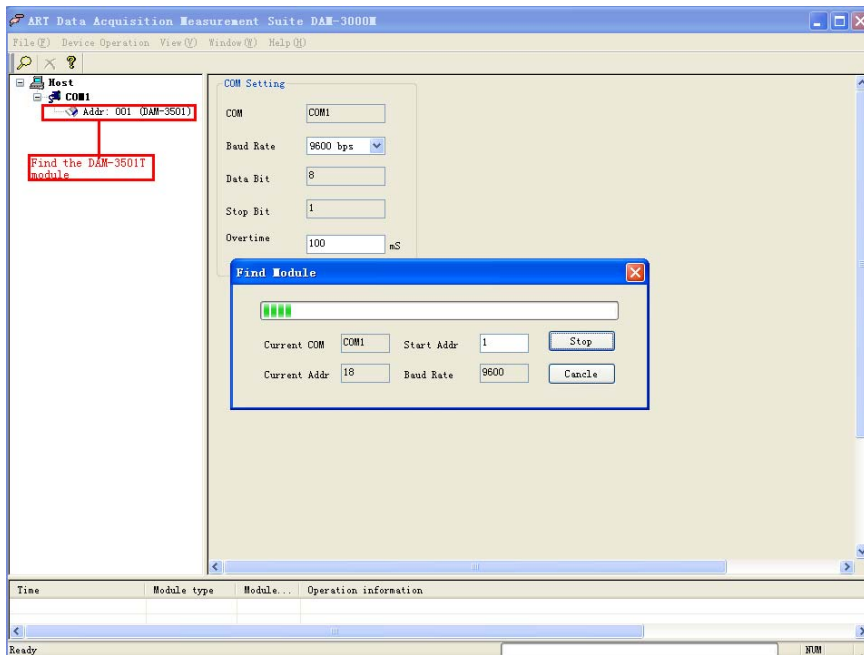
Current signal connection method



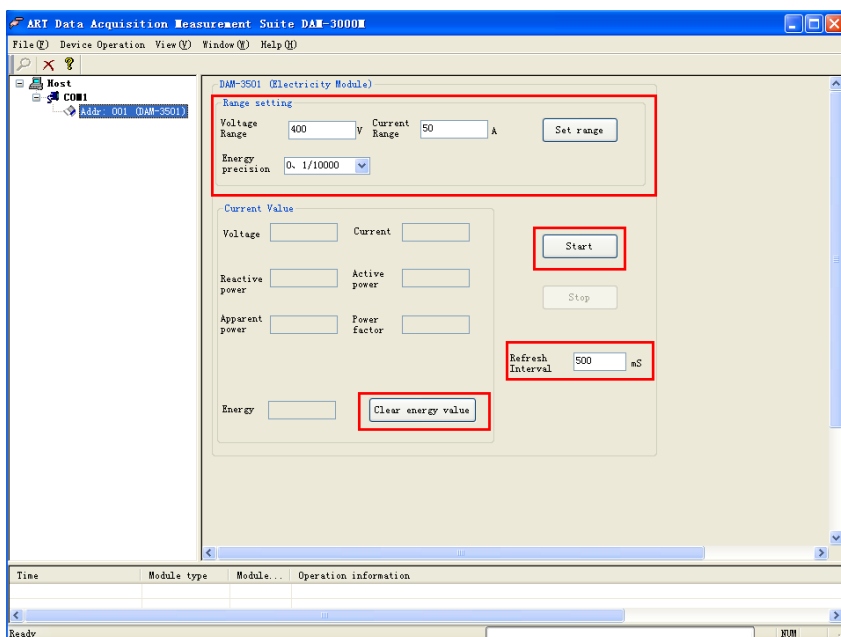
## Operation Interface

Open the DAM-3000 Software, clicking the "COM1" in the system tree of left dialog block





Clicking the “Addr: 001 (DAM-3501)” in the system tree of left dialog block to go to DAM-3501T configuration page. In this page, user can configure the module.



Doubleclicking the “Addr: 001 (DAM-3501)” in the system tree of left dialog block to get “Module Information” box, in this box, we can set “Module Addr” and “Baud Rate”.

